

servPM Low Voltage Servo Motor

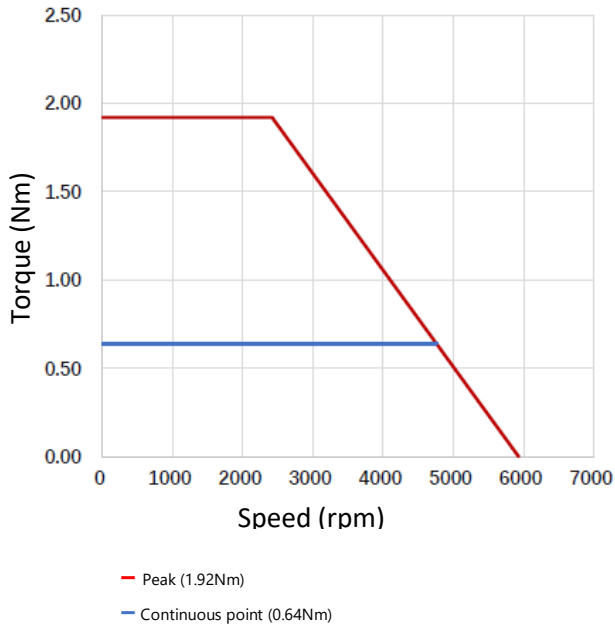


		SM2-60006	SM2-60013	SM2-80015	SM2- 80025
Flange Size	mm	60	60	80	80
Power Rating	W	200	400	480	800
Rated Current	A	6,50	12,00	14,60	22,60
Peak Current	A	19,50	36,00	46,00	67,00
Rated Torque	Nm	0,64	1,27	1,53	2,55
Peak Torque	Nm	1,92	3,81	4,60	7,60
Rated Speed	rpm	3000			
No Load Speed	rpm	5400	5000	5100	4800
Voltage	VDC	48			
Feedback		AqB + Index + Hall / 4096 ppr			
IP Rating		IP54 (IP65)			
Environmental		Ambient: 0C ~ 45C (0C ~ 70C storage) Humidity: 10-90% Altitude: 1,000 m' (per IEC 61800-5-1)			
Weight (with brake)	kg	0.70 (0.96)	1.04 (1.3)	1.44 (2.1)	1.90 (2.58)
Size W x H x L (with brake)	mm	60 x 60 x 64.5 (60 x 60 x 81.5)	60 x 60 x 84.5 (6 x 60 x 101.5)	80 x 80 x 75 (80 x 80 x 105)	80 x 80 x 92 (80 x 80 x 122)

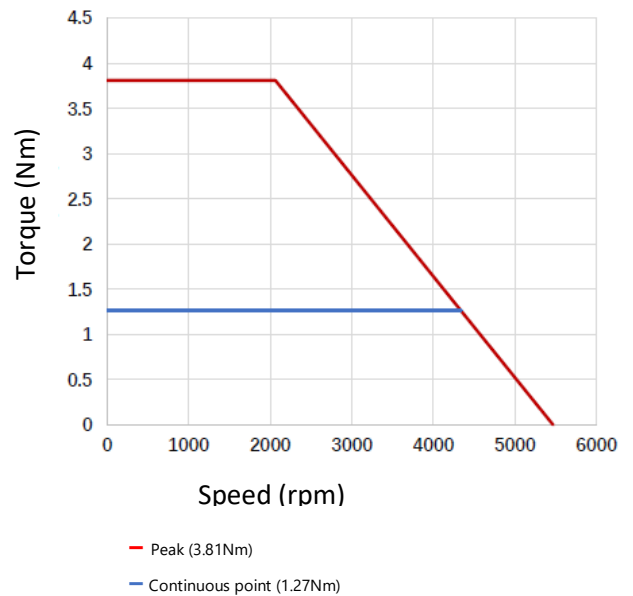
		SM2-60006	SM2-60013	SM2-80015	SM2- 80025
Brake					
Voltage	VDC	24 ± 10%	24 ± 10%	24 ± 10%	24 ± 10%
Release Voltage	VDC	> 1	> 1	> 1.2	> 1.2
Pull-in Voltage	VDC	≤ 16.8	≤ 16.8	≤ 16.8	≤ 16.8
Power Rating	W	7.4	7.4	13.5	13.5
Static Torque (min)	Nm	1.3	1.3	4	4
Resistance	Ω	78 ± 10%	78 ± 10%	42.7 ± 10%	42.7 ± 10%

Speed/Torque Charts

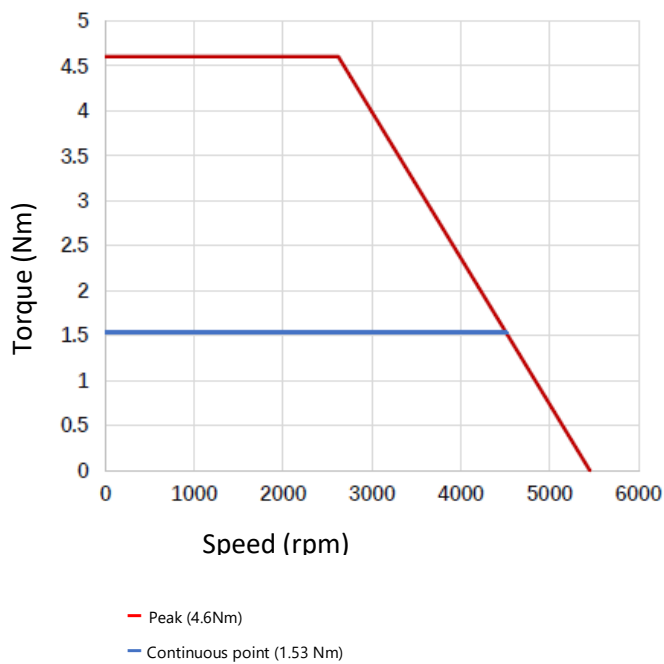
SM2-60006



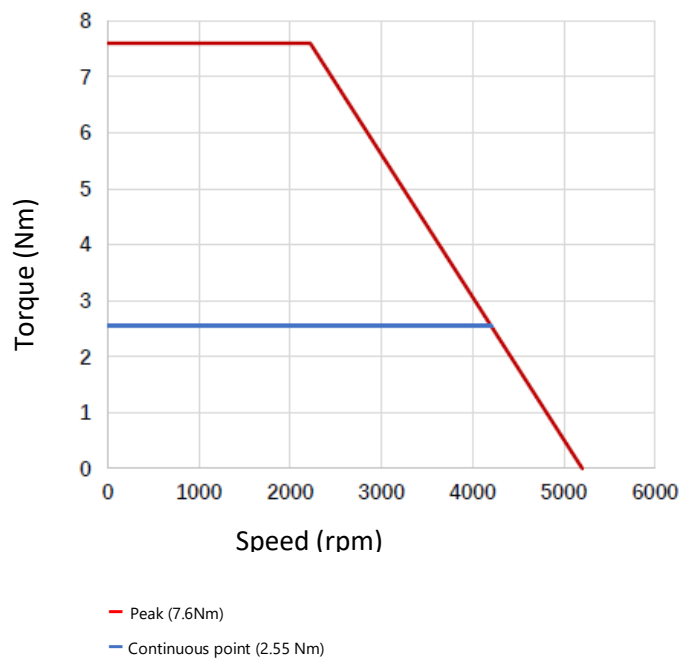
SM2-60013



SM2-80015

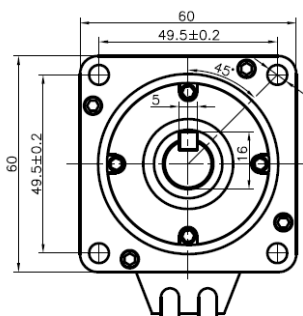
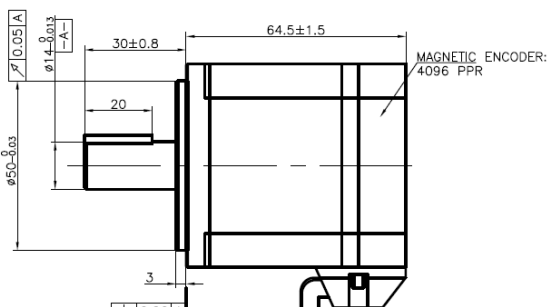


SM2-80025

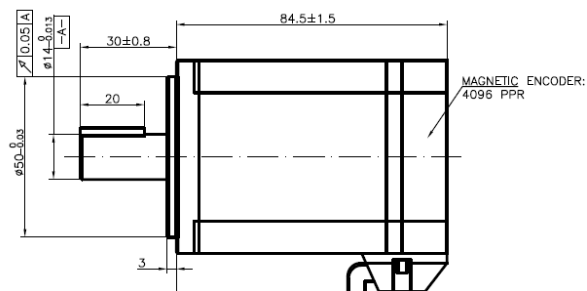


servPM Low Voltage Servo Motor

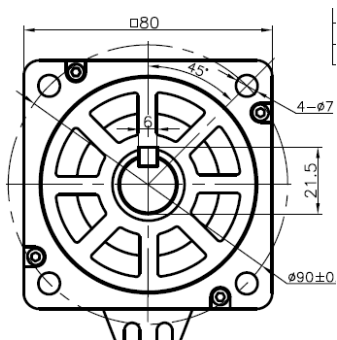
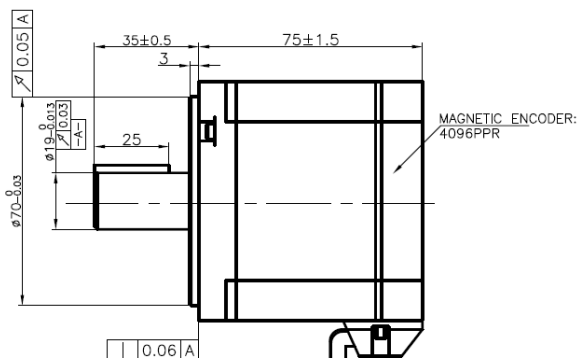
SM2 60006 / 200 W



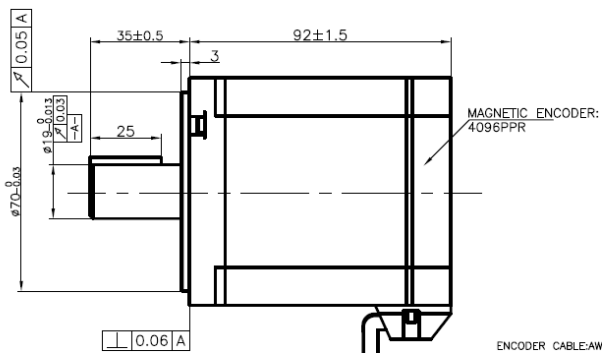
SM2 60013 / 400 W



SM2 80015 / 480 W



SM2 80025 / 800W



Ordering Information



	SM2	-	60	006	4	30	0	5	AB	0	M
SM2 Servo Motor											
Frame Size											
60	60 mm										
80	80 mm										
Torque											
006	0.64 Nm										
013	1.27 Nm										
015	1.53 Nm										
025	2.55 Nm										
DC Bus Voltage											
2	24 VDC (optional)										
4	48 VDC										
Rated Speed											
30	3000 rpm										
Shaft											
0	Smooth										
1	Toothed (optional)										
2	Keyway										
IP Rating											
4	IP40										
5	IP54										
Feedback											
AB	Incremental encoder <small>A, B, Z</small> , Halls										
Brake											
0	No brake										
B	With brake										
Connector											
M	0.35 m cable with connector for servSD	Power	Feedback	Brake							
F	0.35 m cable with flying leads										